

The 3rd International Workshop on Agent-based Mobility, Traffic and Transportation Models, Methodologies and Applications (ABMTRANS)

Agent-Based Simulation of Drivers with the Janus Platform

Stéphane Galland^{a,c,*}, Jocelyn Buisson^{a,b}, Nicolas Gaud^{a,b,c}, Michaël Gonçalves^b, Abderrafiaa Koukam^{a,c}, François Guiot^c, Ludovic Henry^c

^a*Multiagent Group, IRTES-SET, Université de Technologie de Belfort-Montbéliard, France - <http://www.multiagent.fr>*

^b*Voxel SAS, France - <http://www.voxelia.com>*

^c*Department of Computer Science Engineering, Université de Technologie de Belfort-Montbéliard, France*

Abstract

Agent-based models may be now used for modeling complex transportation systems. They permit the analysis and the understanding of the complex phenomenon of interactions between different entities. This paper proposes a multiagent model for the microscopic simulation of drivers in a virtual environment. It is based on the definitions and constraints coming from the agent-oriented software engineering. The paper proposes to make a clear distinction between the models of the individuals (the drivers), and of the physical environment in which the agents are located. This distinction permits to decrease the design's complexity. The selected agent platform to support this model is JANUS, and its environment model JASIM.

© 2014 The Authors. Published by Elsevier B.V.

Selection and peer-review under responsibility of Elhadi M. Shakshuki.

Keywords: Multi-agent simulation, Environment model, Driver model, JANUS Platform, JASIM environment model

1. Introduction

An agent-based model (ABM) is a class of computational models for simulating the actions and interactions of autonomous agents with a view to assessing their effects on the systems as a whole. ABM is now widely used for modeling increasingly complex systems. Application of ABM is not only limited to the computer science domain. Currently, many research areas such as transportation behavior modeling, need to analyze and understand the complex phenomenon of interactions between different entities. While traditional modeling tools cannot catch the complexity, ABM can do it through modeling the interaction of autonomous agents and deducing the rules for such a system. We, therefore, in this paper propose an agent-based model for the simulation of drivers in an urban environment. Plenty of models in the literature provide tools for simulating drivers from the microscopic level to the macroscopic level. Many of them are used an agent-based approach to support the individual characteristics of the drivers¹. *The purpose of this paper is not to provide a novel model for drivers, but to make a proof of implementation on a general-purpose agent platform.* This platform is respecting the definitions and the constraints that are generally assumed in

* Corresponding author. Tel.: +33-384-583-418 ; Fax.: +33-384-583-342

E-mail address: stephane.galland@utbm.fr

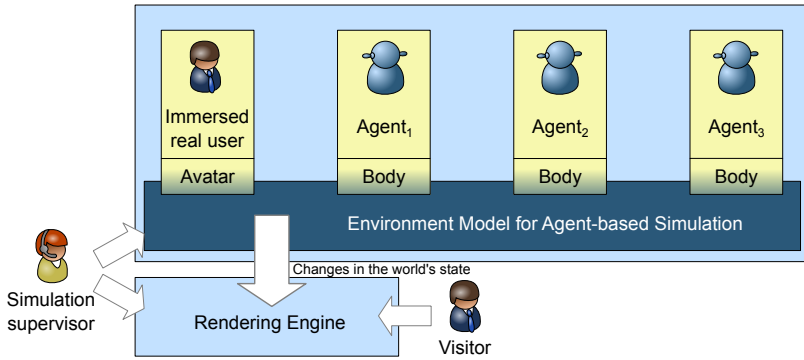


Figure 1. General architecture of the simulator for a virtual environment

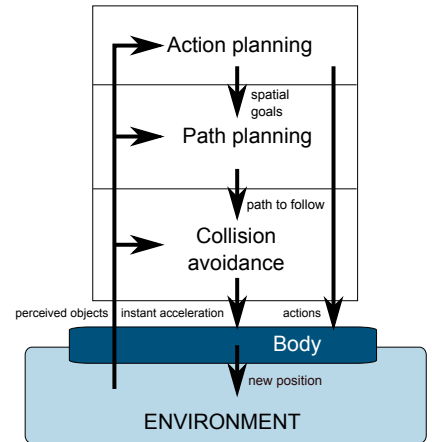


Figure 2. Layered architecture of an agent

the agent-oriented software engineering and agent-oriented simulation (principles of autonomy, locality, body/mind separation. . .), but skipped by a part of the traffic-oriented platforms. These principles ease the creation of simulation tools, and cyber-physic systems with the same model's implementation. Our proposition is based on the multiagent agent platform JANUS¹, and on the virtual environment model JASIM². We propose to make a clear distinction between the agents, and the physical environment in which the agents are located. This paper also describes the driving behavior of each agent.

This paper is structured as follows: Section 2 provides an overview of the simulation model. The model of the physical environment is described in Section 3. Section 4 details the model of the drivers. Several experiments are presented in Section 5. Section 6 concludes this paper and provides perspectives.

2. Overview of the Simulation Model

The models for multiagent simulation are composed of four parts^{3,4}: (i) *Behaviors of the agents*: modeling of the deliberative processes of the agents, (ii) *Interactions*: modeling the actions and the interactions among the agents, (iii) *Environment*: specification and definition of the objects that make up the simulated world, as well as the endogenous dynamics of the environment, (iv) *Scheduling and running*: modeling the passage of time, and definition of the agents' scheduling. The boundary between what is considered as an agent and what is considered as part of the environment depends on the considered problem. However, agents always represent the active components of the studied problem.

A number of basic principles should be followed to ensure the quality of a simulation and limit through simulation: (i) respect the integrity constraints of the environment, (ii) respect the constraint of locality agents, (iii) a clear distinction between the body of the agent (state variables beyond the control of the agent and part of the representation of the agent in the environment, e.g. its speed, position. . .), and the mind of the agent (the state variables under the control of the agent, for example, emotionalism, its goals, motivations. . .)

We propose a simulation model respecting these principles to create simulation models of individuals in virtual worlds. The architecture of our model is shown in the upper part of Figure 1. Each agent can interact with other agents, either directly or by stigmergy. The agent can perceive and act on the physical environment through its representation in it: *its body*. The lower part of the figure shows the display software. Note the presence of an "avatar." The avatar is a representation of a real human user in the simulated universe. To ensure the consistency of the interactions between the avatar and the agents populating the universe, the avatar is subject to the same constraints

¹ <http://www.janus-project.org>

4. Driver Behavior

The architecture used to model agents is composed of three layers, as shown in Figure 2:

- **Strategy Layer:** At the strategic level, individuals decide on the activities to be carried out in the universe. While some of these activities may be discretionary (*e.g.* buying a newspaper), others may be mandatory (validating a ticket before entering the train). All choices can be linked to environmental characteristics (type and location of stores...) In this layer, agents typically use an architecture for selecting actions such as the Belief-Desire-Intention (BDI) architecture or the Goal-Oriented Action Planning model¹².
- **Tactic Layer:** Decisions at the tactical level concern the short or medium term. They must be taken by the agent with the decisions at the strategic level as reference. From the objectives given by the latter, the model of the tactic layer must build a detailed action plan. The locations of the different activities and the paths to reach these locations are determined at this level. The BDI architecture can be used to construct the sequence of actions. Shortest path searching algorithms can form the basis for calculation of routes: A*¹³, D*¹⁴.
- **Operation Layer:** At the operational level, individuals take decisions in the short term. These decisions are guided by those provided by the previous layer. The features within this layer decide the trajectory of an individual, the speed or acceleration. Unlike¹⁵, who considers only the choice of the best speed for an individual, we believe that the main objective of the individual's model is to avoid collisions with the objects and the other individuals in the surrounding environment. In other words, we consider that the models in the operational layer aim to determine the movements and actions that will make the body of an individual.

There are interactions between the models for each decision level. Figure 2 provides an example of interactions between the layers constituting a simulation model of the driver. This architecture is also used for the simulation of pedestrians and cyclists in virtual cities^{16,17,18}, in railway stations and airports^{19,20}, to simulate the evacuation of a building in case of fire²¹.

To simulate drivers, the agents should decide the instant acceleration of the vehicle at any time t . The intelligent driver model²² is a time-continuous car following model for the simulation of freeway and urban traffic. It describes the dynamic of the positions and velocities of a vehicle. The initial model is adapted to discrete time progression by evaluating one of the two following equations at each time step: the free road $\dot{v}_\alpha^{\text{free}}$, and the interaction $\dot{v}_\alpha^{\text{int}}$ terms, which are detailed by Equations 1 and 2, respectively. The first one is used when the distance to the next obstacle is superior to a certain threshold, which is equivalent to an absence of an obstacle. The second term is used when there is an obstacle close enough to have to adapt the speed according to this obstacle.

$$\dot{v}_\alpha^{\text{free}} = a \left(1 - \left(\frac{v_\alpha}{V_\alpha} \right)^\delta \right) \quad (1) \quad \dot{v}_\alpha^{\text{int}} = -a \left(\frac{s + v_\alpha T}{d} + \frac{v_\alpha \Delta v_\alpha}{2d \sqrt{ab}} \right)^2 \quad (2) \quad V_d = \frac{102}{1 + \frac{346}{R^{1.5}}} \quad (3)$$

V_α and v_α are the maximum speed and the speed of the vehicle α , respectively. a and b are the maximum comfortable acceleration and deceleration. T is the desired time headway to the ahead obstacle. s is the safety distance between two vehicles. d is the distance from α to the ahead obstacle. δ is a constant usually set to 4.

To determine the maximum speed on a portion of the road, the driver mainly read the traffic signs. However, there is a case where the agent should drive below the speed limit: turning at a crossroad, following a curved road. Consequently, the maximum comfortable speed under these conditions should be computed. This speed is based on the V_{85} ²³ speed: the speed below which 85% of the people drive. The comfortable speed is computed by Equation 3 from²⁴, where R is the radius of the road curve.

5. Experiments

Experimentations were done on a population of 3000 people (input data from interviews). One of the major goals of our experimentations is to compute and possibly optimize the (complex) agent-based reproduction of the drivers. The trips are extracted from the data gathered by public interviews in the city of Belfort (France). Figure 4 illustrates

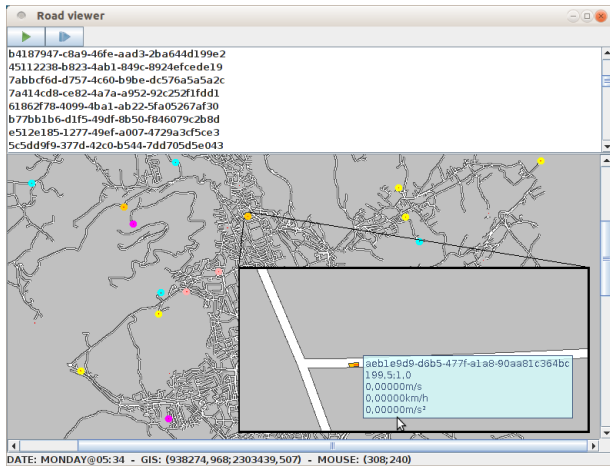


Figure 4. Screenshot of the simulator on the JASim

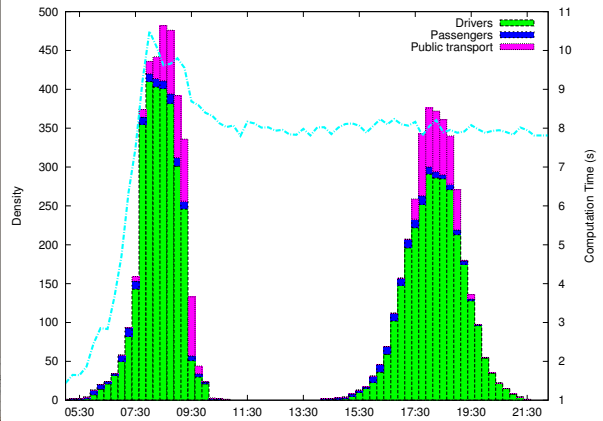


Figure 5. Repartition of the transport modes during the reference day

the simulator window. Figure 5 gives the histogram of the repartition of the selected transport modes during for every quarter of hours during the reference day. The passengers represent 4% of the population. This amount includes carpooler²⁵, and people from the household of the driver. The population that is using the public transport mode corresponds to the people who have not succeeded their carpooling negotiations. It is mainly due to too constrained time windows. Figure 5 illustrates the computation time of the simulation. This curve depends on the numbers of launched agents. When the number of agents is stable, the computation time is stable too.

6. Conclusion

This paper provides a brief overview of the simulation model of drivers on the JANUS and JASim platforms. The model is based on the distinction between the model of the urban environment and the models of the agent s' behaviors. The influence-reaction model⁷ is adapted and applied to support coherent interactions between an agent and its physical environment. This interaction is supported by the representation of the agent in this environment: its body. This model permits to reproduce the behavior of the drivers according to the public interviews, which are available for the individual mobility within the region of Belfort (France). Our model has scalability issues that are still to be solved. Apart from scalability issues, future research will focus on enhancing the driving behavior by introducing better acceleration computations, lane-changing algorithms... Another major perspective is to translate the model to the SARL multiagent language³ and its related platform Janus-2⁴, and to compare the results to a model running on GAMA⁵ or MATSIM⁶.

Acknowledgments

The JASim model and related tools are contributing to the SIMULATE commercial offer of the VOXELIA SAS⁷ company, France. The views and conclusions contained in this document are those of the authors, and should not be interpreted as representing the official policies, either expressed or implied, of the Voxelia SAS.

³ <http://www.sarl.io>

⁴ <http://www.janusproject.io>

⁵ <https://code.google.com/p/gama-platform/>

⁶ <http://www.matsim.org/>

⁷ <http://www.voxelia.com>

References

1. C. Chen, H. Cheng, A review of the applications of agent technology in traffic and transportation systems, *IEEE Transactions on Intelligent Transportation Systems* 11 (2) (2010) 485–497. doi : 10.1109/TITS.2010.2048313.
2. S. Galland, N. Gaud, J. Demange, A. Koukam, Environment model for multiagent-based simulation of 3D urban systems, in: the 7th European Conference on Multiagent Systems (EUMAS09), Ayia Napa, Cyprus, 2009, paper 36.
3. F. Michel, Formalism, tools and methodological elements for the modeling and simulation of multi-agents systems, Ph.D. thesis, LIRMM, Montpellier, France (Dec. 2004).
4. N. Gaud, S. Galland, F. Gechter, V. Hilaire, A. Koukam, Holonic multilevel simulation of complex systems: Application to real-time pedestrians simulation in virtual urban environment, *Simulation Modelling Practice and Theory* 16 (10) (2008) 1659–1676. doi : 10.1016/j.simpat.2008.08.015.
5. J. Odell, H. Parunak, M. Fleisher, S. Brueckner, Modeling Agents and their Environment, in: F. Giunchiglia, J. Odell, G. Weiss (Eds.), *Agent-Oriented Software Engineering III*, Vol. 2585 of *Lecture Notes In Computer Science*, Springer-Verlag, N.Y. (USA), 2002.
6. D. Weyns, M. Schumacher, A. Ricci, M. Viroli, T. Holvoet, Environments in multiagent systems, *The Knowledge Engineering Review* 20 (2) (2005) 127–141.
7. F. Michel, The IRM4S model: the influence/reaction principle for multiagent based simulation, in: *Sixth International Joint Conference on Autonomous Agents and Multiagent Systems (AAMAS07)*, ACM, 2007. doi : 10.1145/1329125.1329289.
8. D. Weyns, H. V. D. Parunak, F. Michel, T. Holvoet, J. Ferber, Environments for Multiagent Systems State-of-the-Art and Research Challenges, in: D. Weyns, H. V. D. Parunak, F. Michel (Eds.), *Third International Workshop (E4MAS 2006)*, Vol. 4389 of *Lecture Notes in Artificial Intelligence*, Springer, Hakodate, Japan, 2006, pp. 1–47.
9. S. J. Russell, P. Norvig, *Artificial Intelligence: A Modern Approach*, 2nd Edition, Pearson Education, 2003.
10. M. Cossentino, N. Gaud, V. Hilaire, S. Galland, A. Koukam, ASPECS: an agent-oriented software process for engineering complex systems - how to design agent societies under a holonic perspective, *Autonomous Agents and Multi-Agent Systems* 2 (2) (2010) 260–304. doi : 10.1007/s10458-009-9099-4.
11. S. Galland, O. Lamotte, N. Gaud, MetroB: Evaluation and simulation of public transport system, in: the *Institution of Engineering and Technology Conference on Smart and Sustainable City 2011 (ICSSC11)*, Institute Engineering and Technology and Shanghai University, Shanghai University Press, Shanghai, China, 2011.
12. J. Orkin, Applying goal-oriented action planning to games, in: S. Rabin (Ed.), *AI Game Programming Wisdom 2*, Charles River Media, 2003, pp. 217–228.
13. R. Dechter, J. Pearl, Generalized best-first search strategies and the optimality of A*, *J. ACM* 32 (3) (1985) 505–536. doi : 10.1145/3828.3830.
URL <http://doi.acm.org/10.1145/3828.3830>
14. A. Stentz, Optimal and Efficient Path Planning for Partially-Known Environments, in: *International Conference on Robotics and Automation*, 1994, pp. 3310–3317.
15. S. Hoogendoorn, P. Bovy, State-of-the-art of vehicular traffic flow modelling, in: *Proceedings of the Institution of Mechanical Engineers*, Vol. 215, 2001, pp. 283–303.
16. D. Thalmann, S. R. Musse, *Crowd simulation*, Springer, 2007.
17. S. Paris, J. Pettré, S. Donikian, Pedestrian reactive navigation for crowd simulation: a predictive approach, *Computer Graphics Forum* 26 (2007) 665–674. doi : 10.1111/j.1467-8659.2007.01090.x.
18. J. Buisson, S. Galland, N. Gaud, M. Gonçalves, A. Koukam, Real-time collision avoidance for pedestrian and bicyclist simulation: a smooth and predictive approach, in: A.-u.-h. Yasar, L. Knapen (Eds.), *2nd International Workshop on Agent-based Mobility, Traffic and Transportation Models, Methodologies and Applications (ABMTRANS13)*, Elsevier, Halifax, Nova Scotia, Canada, 2013, pp. 815–820, best Paper Award. doi : 10.1016/j.procs.2013.06.108.
URL <http://www.multiagent.fr/Publication:ABMTRANS13>
19. W. Daamen, Modelling passenger flows in public transport facilities, Ph.D. thesis, Technical University of Delft (2004).
20. J. Demange, A model of environment for the multilevel simulation: application to the simulation of crowds, Ph.D. thesis, Université de Technologie de Belfort-Montbéliard, Belfort, France, in French (Dec. 2012).
21. A. Geramifard, P. Nayeri, R. Zamani-Nasab, J. Habibi, A hybrid three layer architecture for fire agent management in rescue simulation environment, *International Journal of Advanced Robotic Systems* 2 (2) (2005) 111–116.
22. M. Treiber, A. Hennecke, D. Helbing, Congested traffic states in empirical observations and microscopic simulations, *Physical Review E* 62 (2000) 1805–1824. doi : 10.1103/PhysRevE.62.1805.
URL <http://link.aps.org/doi/10.1103/PhysRevE.62.1805>
23. A. D'Andrea, F. Carbone, S. Salviera, O. Pellegrino, The most influential variables in the determination of V85 speed, *Procedia - Social and Behavioral Sciences* 53 (0) (2012) 633–644, ;ce:title;SIIV-5th International Congress - Sustainability of Road Infrastructures 2012; ;ce:title;. doi : <http://dx.doi.org/10.1016/j.sbspro.2012.09.913>.
URL <http://www.sciencedirect.com/science/article/pii/S1877042812043753>
24. Sétra, The design of interurban intersections on major roads, Tech. rep., Service d'études techniques des routes et autoroutes (Dec. 2002).
25. S. Galland, A.-U.-H. Yasar, L. Knapen, N. Gaud, D. Janssens, O. Lamotte, G. Wets, A. Koukam, Multi-agent simulation of individual mobility behavior in carpooling using the JANUS and JASIM platforms, *International Journal on Transport Research Part C* doi : 10.1016/j.trc.2013.12.012.
URL <http://www.sciencedirect.com/science/article/pii/S0968090X14000035>